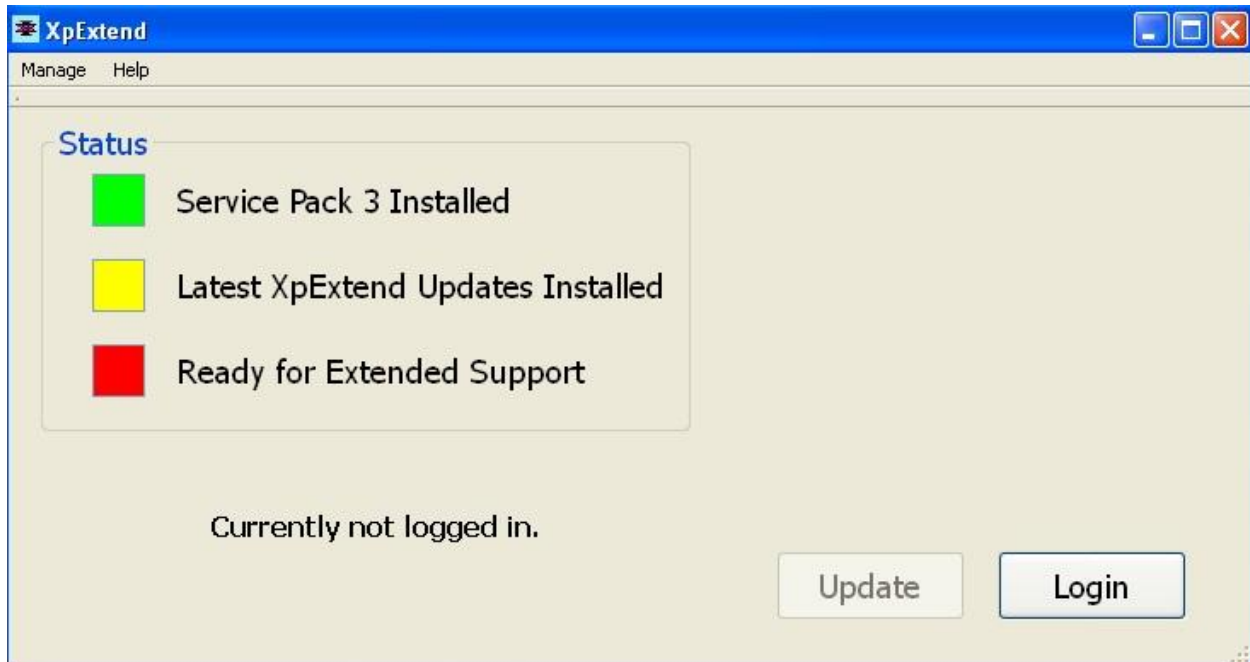


# XpExtend User Manual



Using XpExtend is easy. The most important steps are logging in (Log In button) and updating (Update button, if available).

Log in with your email address and password you used to register with [www.xpextend.com](http://www.xpextend.com). If your account does not exist or you have not paid for the software <[http://en.wikipedia.org/wiki/Comma#Separation\\_of\\_clauses](http://en.wikipedia.org/wiki/Comma#Separation_of_clauses)> (didn't use comma here) the program will respond with an "Account Expired" message. Fix the "Account Expired" message by visiting our website (<http://www.xpextend.com>) to purchase the software.



**If your credentials are valid, several actions may occur:**

**If you have not upgraded to Windows XP SP 3, we offer help.**

XpExtend helps you automatically get up-to-speed on the available updates. Simply follow the instructions.

**If an update is ready, you are notified and must press Update if enabled.**

**After updating the operating system, you are asked to reboot. Updates only apply after rebooting.**

**In short, follow the easy-to-use interface to update your machine.**

**XpExtend**

<http://www.xpextend.com/>

[help@xpextend.com](mailto:help@xpextend.com)

**Manual 1.2**